

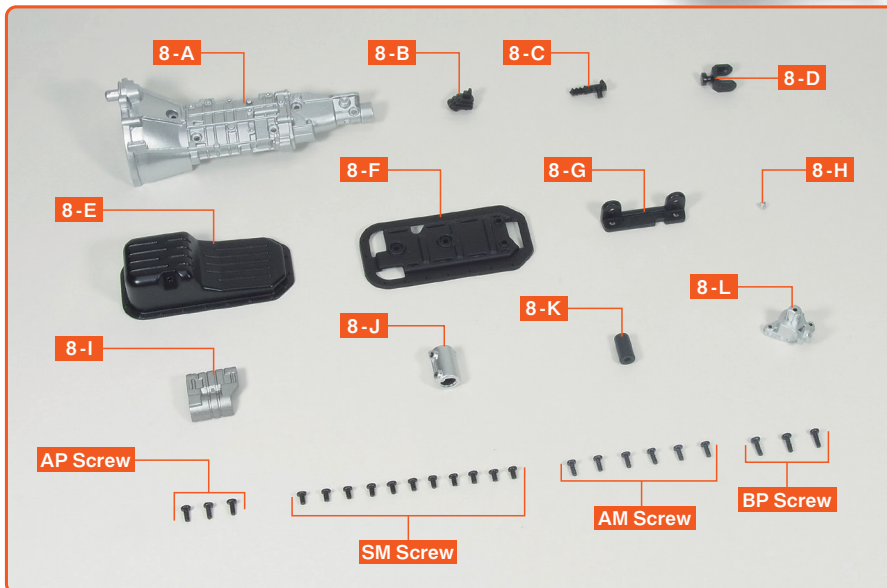
Issue 8

Attach the left transmission case and cylinder block to the engine assembled up to Issue 7. Then fit the oil pan, starter, A/C compressor, and other parts.

Attach the Left Transmission Case and Oil Pan



※ In this guide "Left" or "(L)", and "Right" or "(R)", refer to the direction as viewed from the driver's seat.



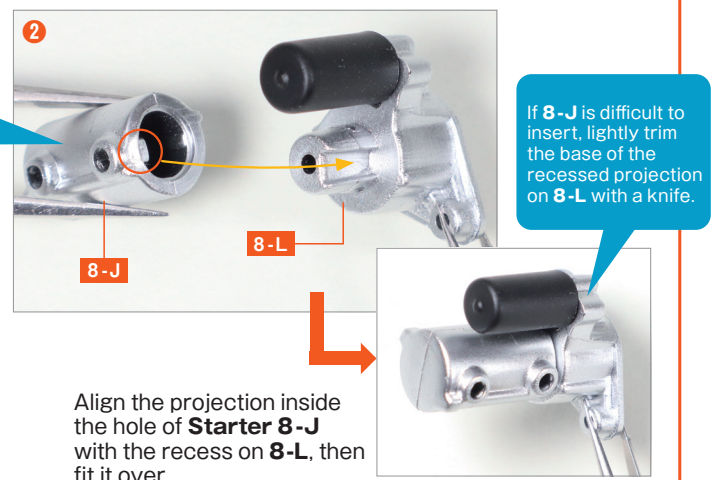
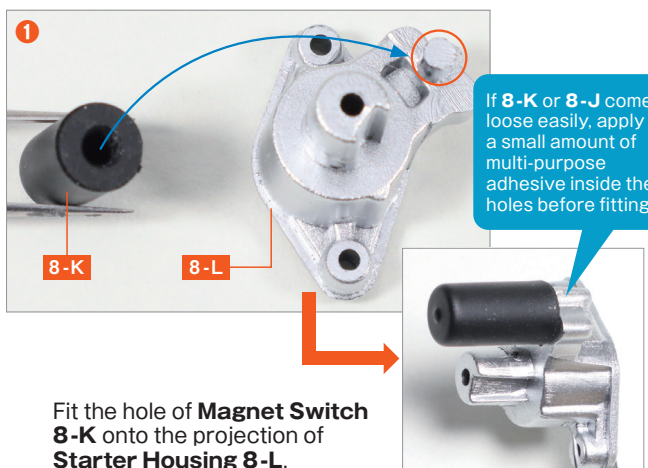
8-A	Transmission Case (L)
8-B	Clutch Release Fork Boot
8-C	Clutch Release Cylinder
8-D	Sleeve Yoke
8-E	Oil Pan
8-F	Oil Pan Baffle Plate
8-G	Oil Pan Bracket
8-H	Oil Pan Drain Plug
8-I	Starter Cover
8-J	Starter
8-K	Magnet Switch
8-L	Starter Housing
AP Screw	(1.7×4mm) ×3 (1 spare)
BP Screw	(1.7×5mm) ×3 (1 spare)
AM Screw	(1.7×4mm) ×6 (1 spare)
SM Screw	(1.7×3mm) ×11 (2 spare)

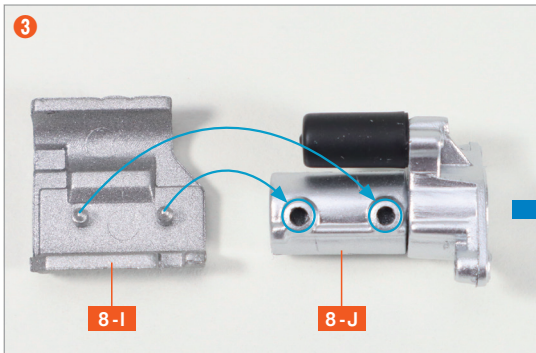
View the follow-along video



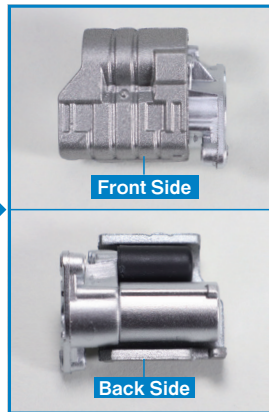
※Due to the model's design, the shapes of some parts may differ from those of the real vehicle.

step 1 Assemble the Starter

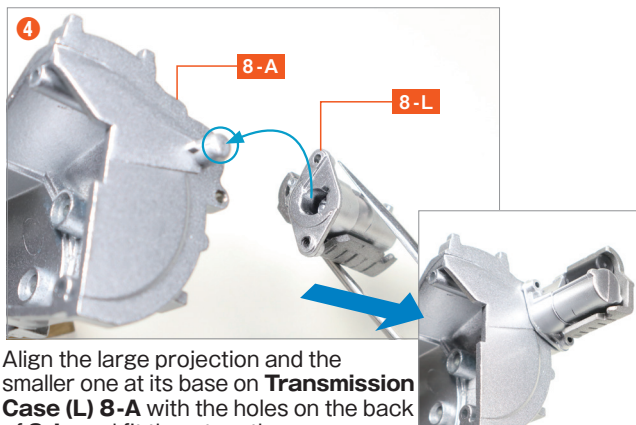




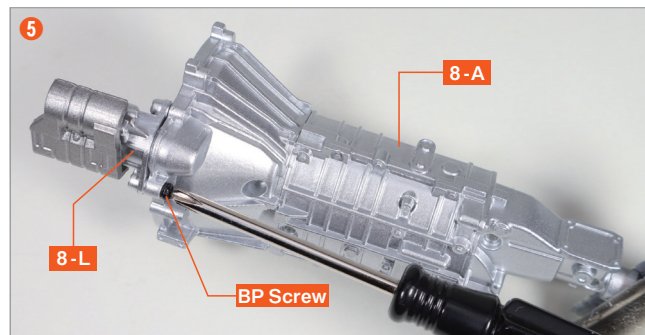
Fit the two projections on the back of **Starter Cover 8-I** into the holes on **8-J**.



Step complete

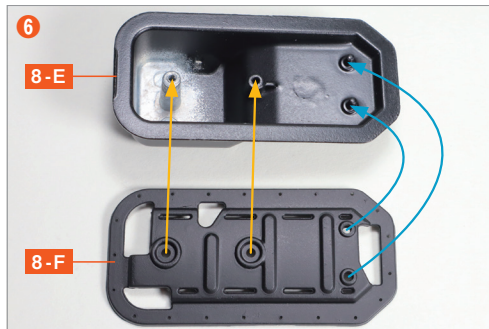


Align the large projection and the smaller one at its base on **Transmission Case (L) 8-A** with the holes on the back of **8-L**, and fit them together.

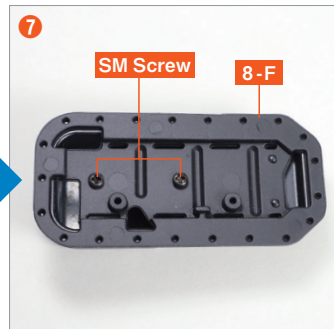


While holding the assembled starter firmly in place, secure it with a **BP screw**.

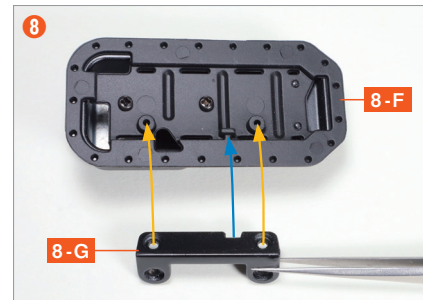
step 2 Assemble the Oil Pan



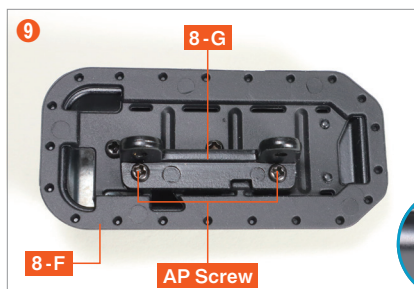
Align the **Oil Pan 8-E** and the **Oil Pan Baffle Plate 8-F**, and match their screw holes and protrusions.



Place **8-F** onto **8-E** and secure with two **SM screws**.



Fit the **Oil Pan Bracket 8-G** by aligning its screw hole recesses and notches with the holes and protrusions on **8-F**.



Hold **8-G** upright and secure it with **AP screws** at two points.

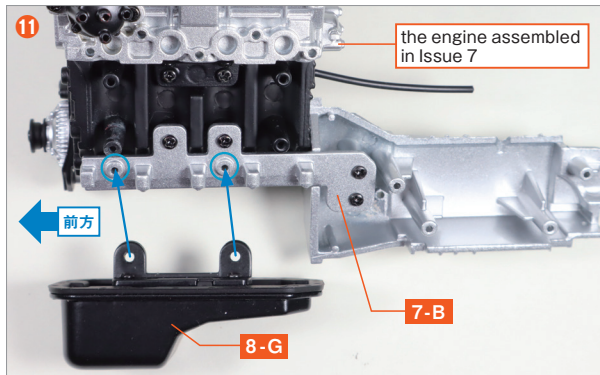


Turn **8-E** over and fit the **Oil Pan Drain Plug 8-H** by aligning its square peg with the square hole.

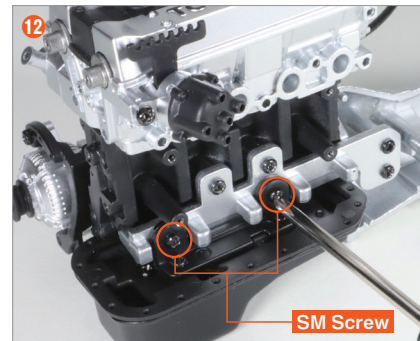
Step complete



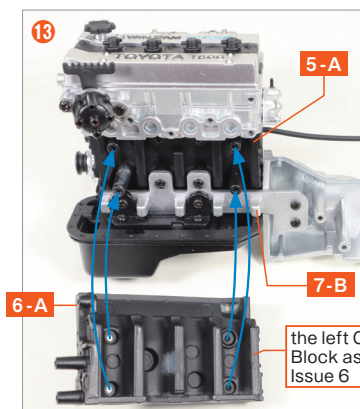
step 3 Attach the Oil Pan and the Left Cylinder Block



Prepare the engine assembled in Issue 7 and position the assembled Oil Pan with the deeper side at the front. Align the recesses in the screw holes of **8-G** with the protrusions in the screw holes of **Mount Bracket 7-B** and fit into place.

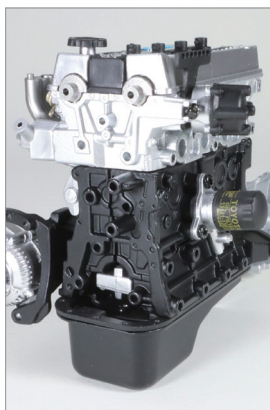


Secure in place with **SM screws** at the two points.

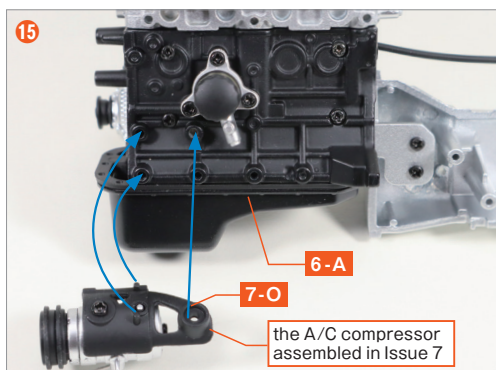


Prepare the left **Cylinder Block 6-A** assembled in Issue 6, align the protrusions on **5-A** with the recesses on the back of **6-A**, and sandwich **7-B** between **5-A** and **6-A**.

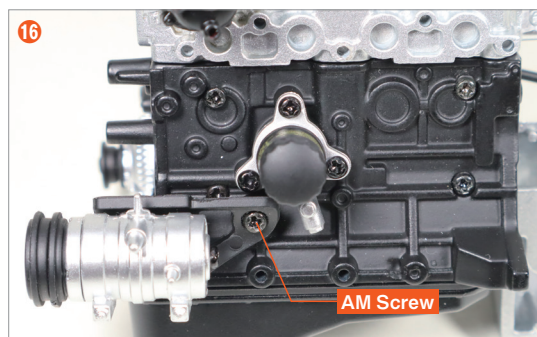
Press firmly to ensure there is no gap between **5-A** and **6-A**.



Secure it using **AM screws**.



Prepare the A/C compressor assembled in Issue 7, and align the two pegs and screw holes of the **A/C Compressor Bracket 7-O** with **6-A**.

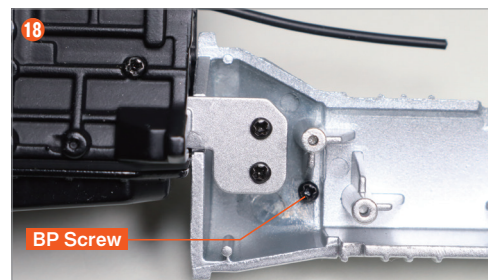


Secure it using **AM screws**.

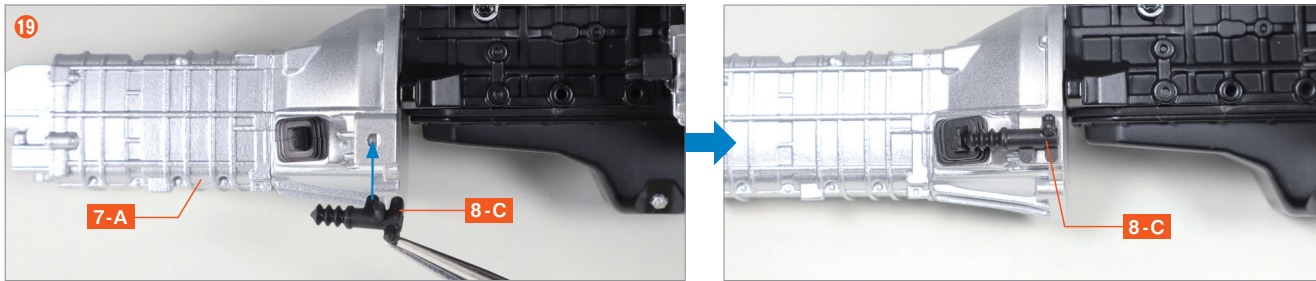
step 4 Attach the Clutch Release



Turn the engine upside down and align the peg and **Clutch Release Fork Boot 8-B** projection with the holes on **Transmission Case (R) 7-A**.

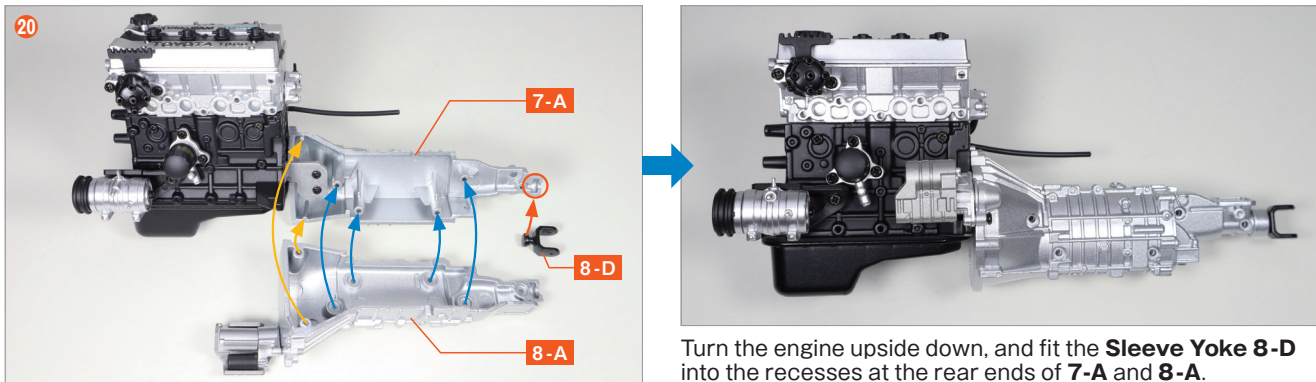


While holding **8-B** in place to prevent it from coming off, turn it over and secure it with a **BP screw**.

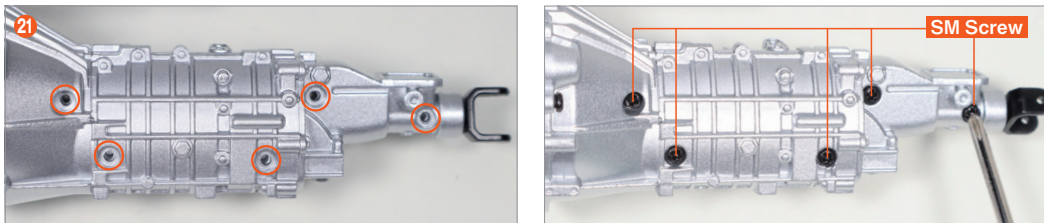


Insert the semicircular projection of the **Clutch Release Cylinder 8-C** into the semicircular hole on **7-A**. If **8-C** is difficult to fit, press it in firmly using a cloth for protection.

step 5 Complete the Transmission Case



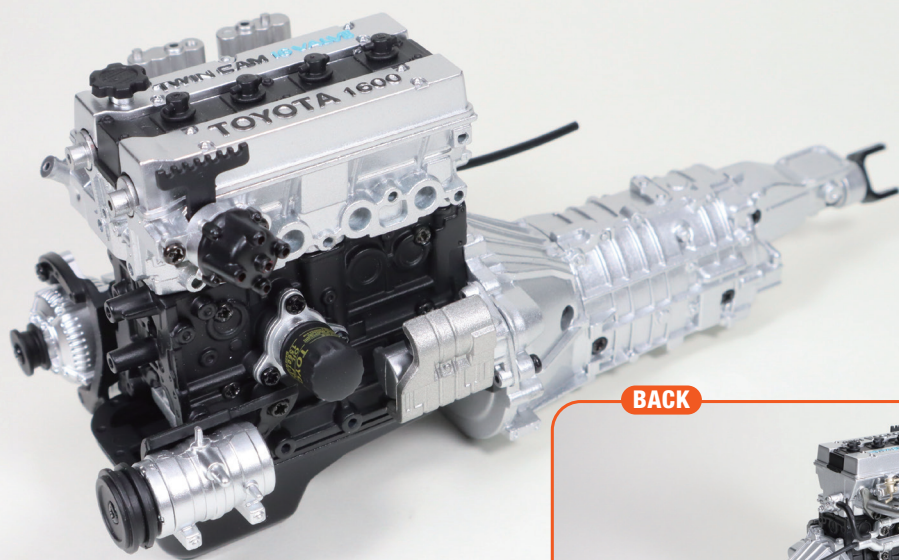
Turn the engine upside down, and fit the **Sleeve Yoke 8-D** into the recesses at the rear ends of **7-A** and **8-A**.



Secure it in five places with **SM screws**.

Complete

The assembly for Issue 8 is complete. The main engine components, the Cylinder Block, Cylinder Head, and Transmission Case, have now been assembled. In Issue 9, the pulleys and timing belt will be installed at the front of the engine.



BACK

